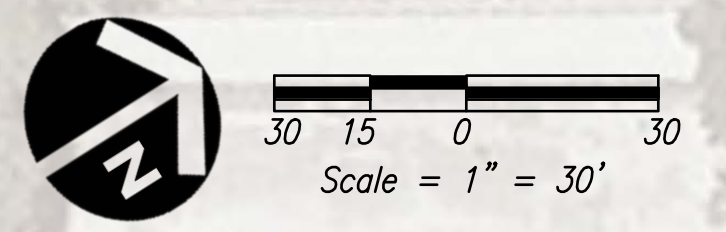
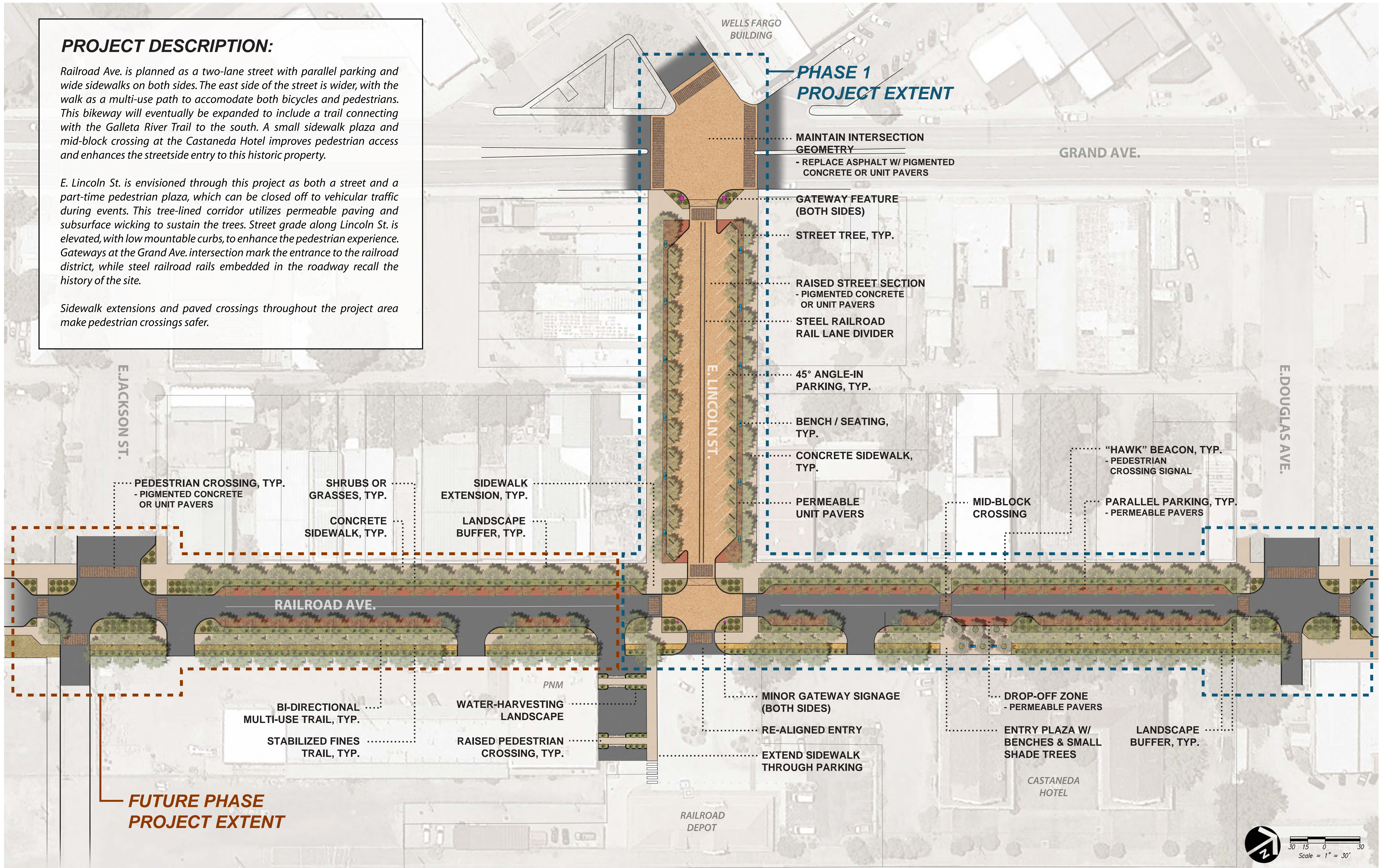


PROJECT DESCRIPTION:

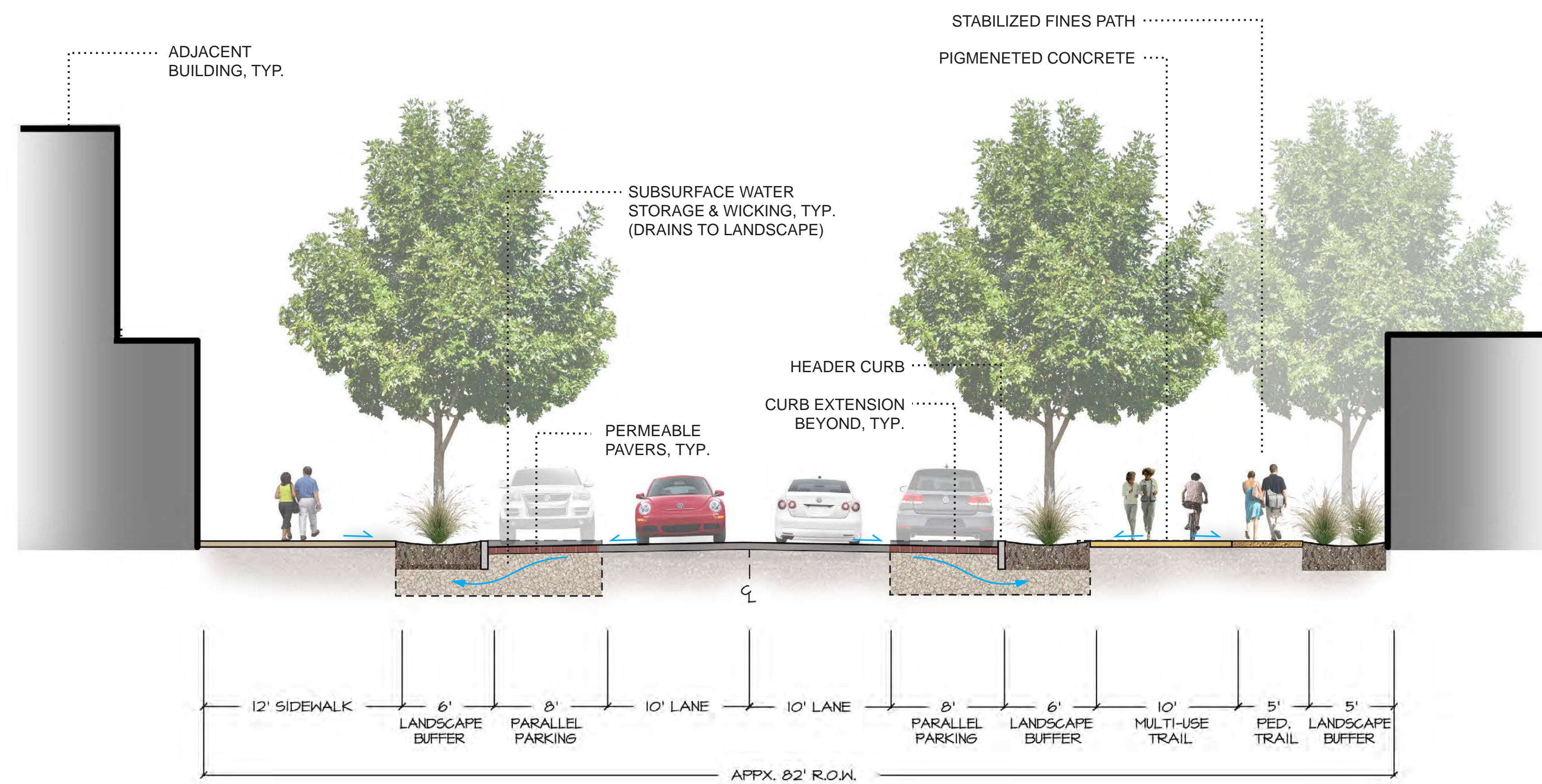
Railroad Ave. is planned as a two-lane street with parallel parking and wide sidewalks on both sides. The east side of the street is wider, with the walk as a multi-use path to accommodate both bicycles and pedestrians. This bikeway will eventually be expanded to include a trail connecting with the Galleta River Trail to the south. A small sidewalk plaza and mid-block crossing at the Castaneda Hotel improves pedestrian access and enhances the streetside entry to this historic property.

E. Lincoln St. is envisioned through this project as both a street and a part-time pedestrian plaza, which can be closed off to vehicular traffic during events. This tree-lined corridor utilizes permeable paving and subsurface wicking to sustain the trees. Street grade along Lincoln St. is elevated, with low mountable curbs, to enhance the pedestrian experience. Gateways at the Grand Ave. intersection mark the entrance to the railroad district, while steel railroad rails embedded in the roadway recall the history of the site.

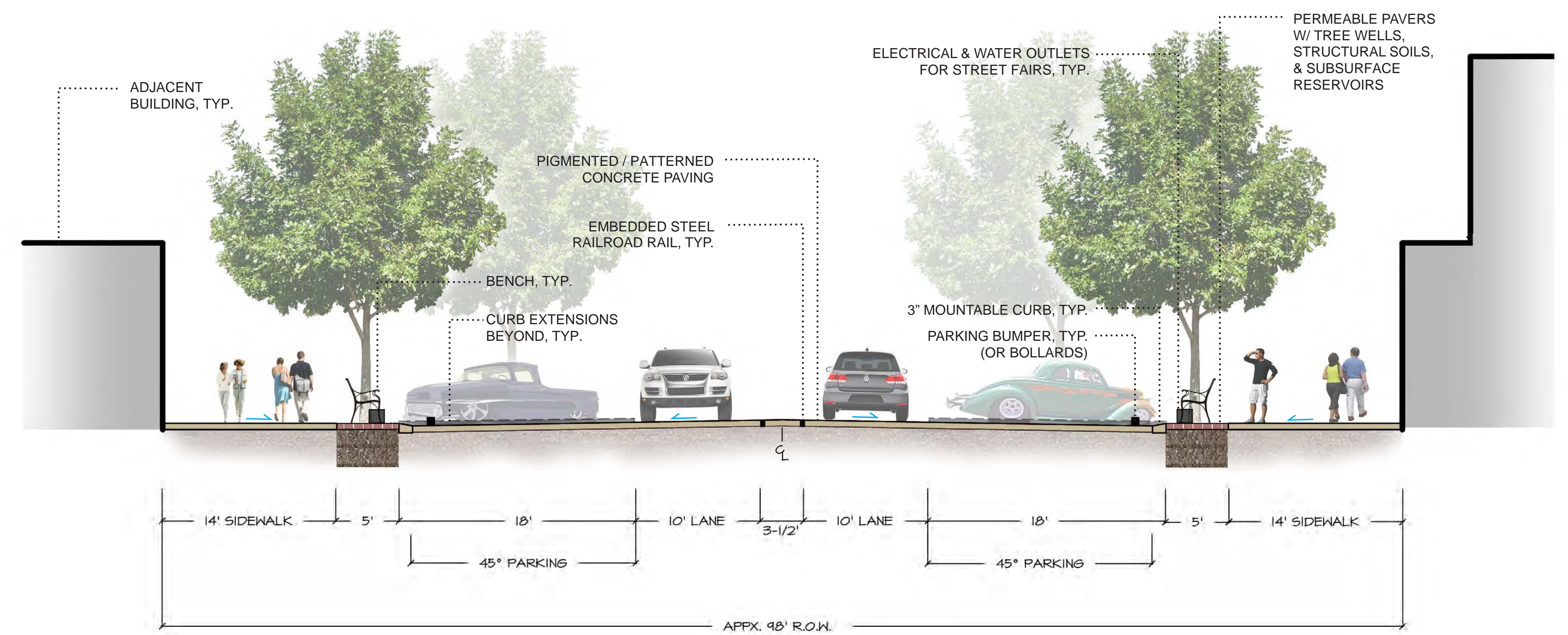
Sidewalk extensions and paved crossings throughout the project area make pedestrian crossings safer.



**Great Blocks on Mainstreet
Conceptual Plan**



RAILROAD AVE. SECTION
VIEW TO NORTH



E. LINCOLN ST. SECTION
VIEW TO WEST

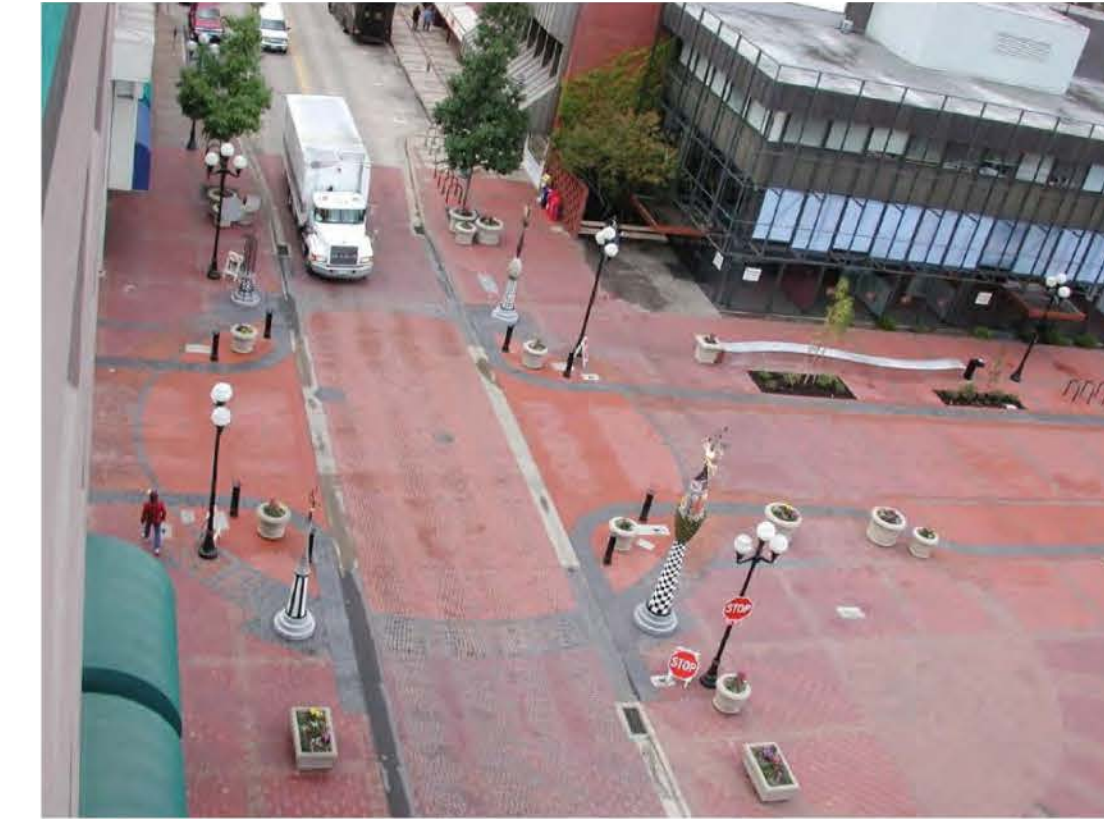
Great Blocks on Mainstreet Typical Street Sections

City of Las Vegas, NM

March 2016



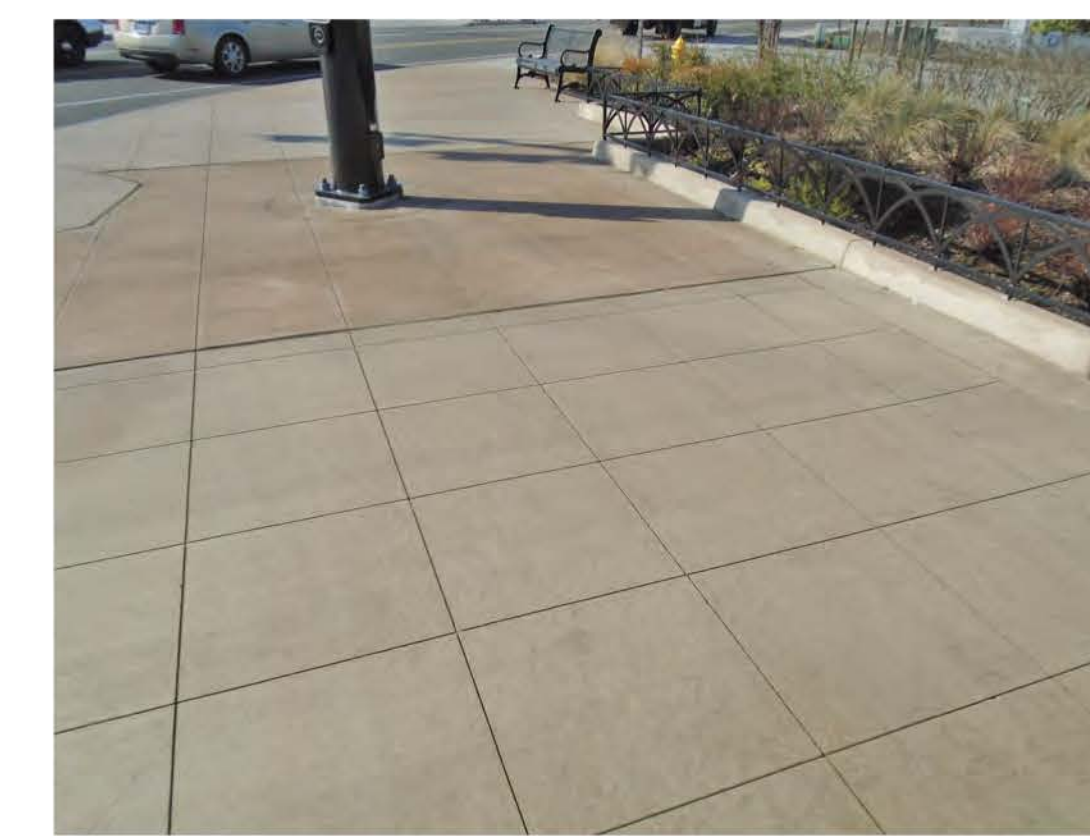
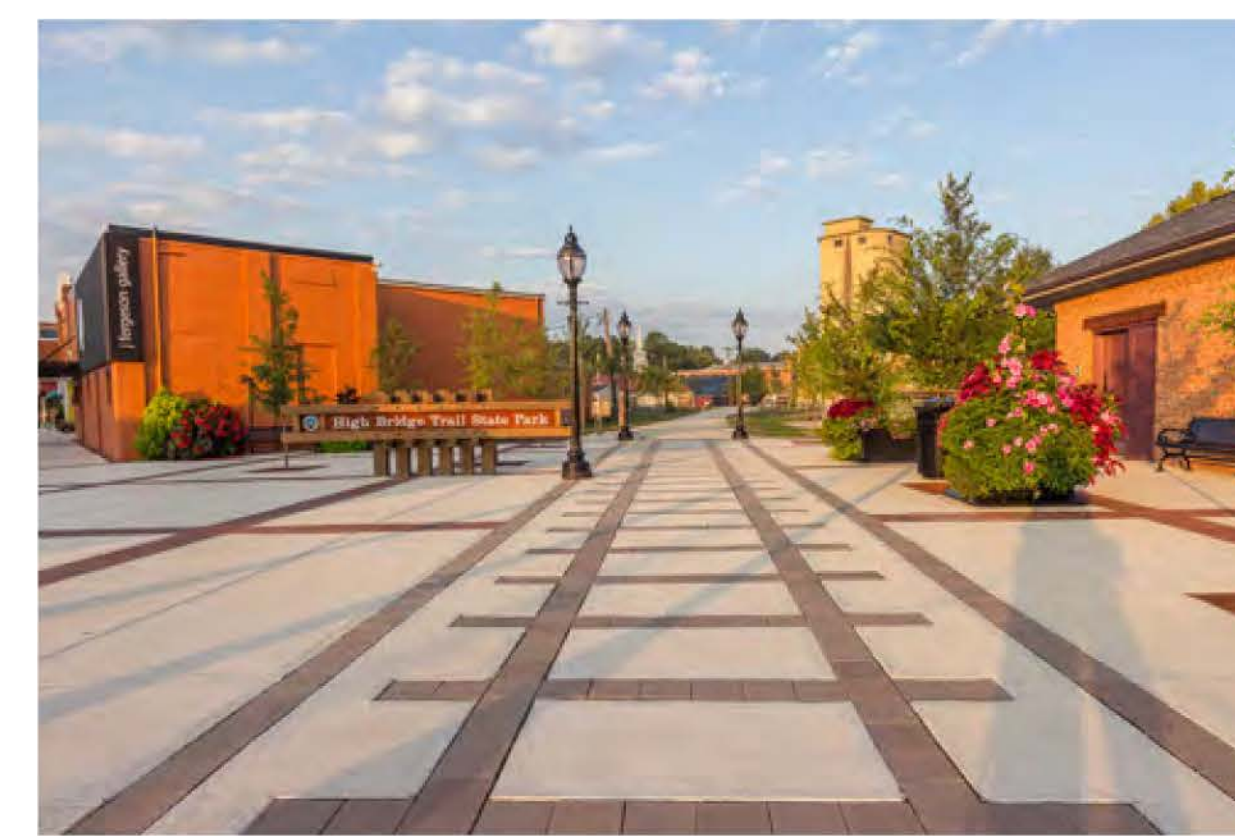
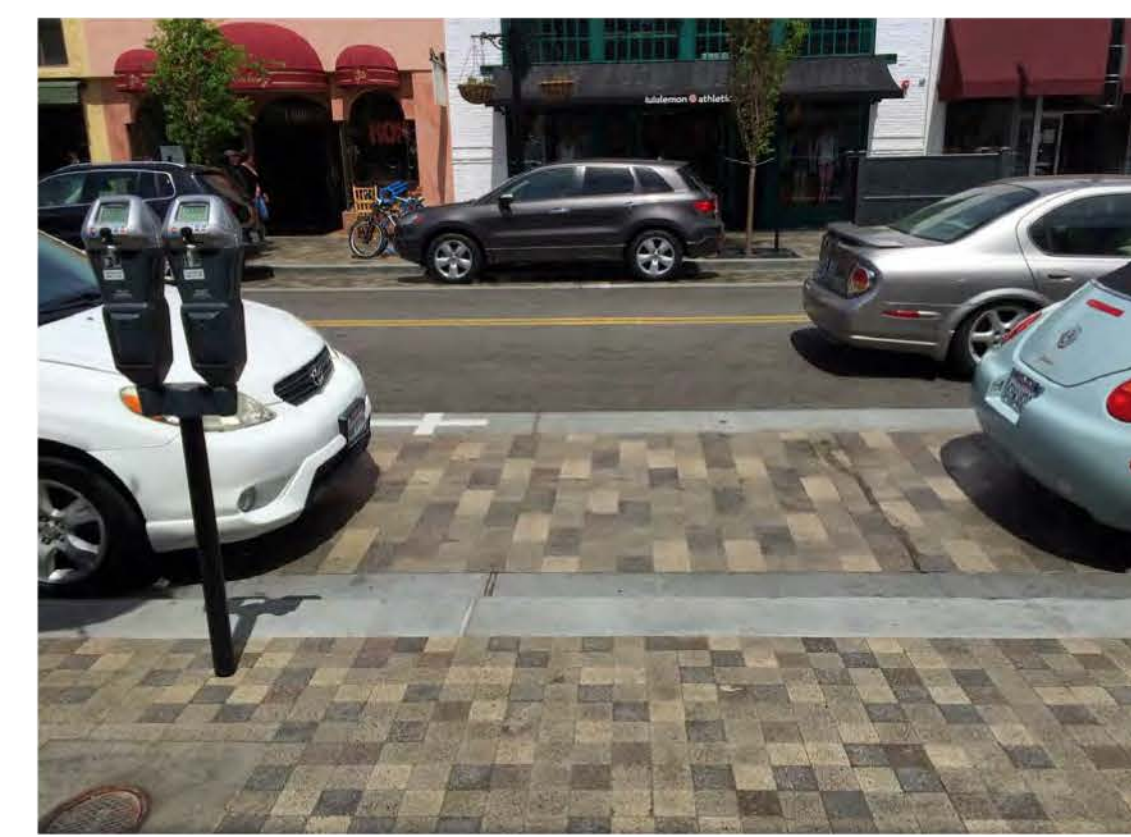
TRAFFIC CALMING



STREETSCAPE



PAVING



Great Blocks on Mainstreet
Precedents I

City of Las Vegas, NM

March 2016





Great Blocks on Mainstreet Precedents II

City of Las Vegas, NM

March 2016

