



*Tying Our Economic Development Community Together*

**NewMARC**  
New Mexico Association of Regional Councils



# NewMARC

## New Mexico Association of Regional Councils

### District I

Jeff Kiely

**Northwest New Mexico COG**

### District II

Tim Armer

**North Central New Mexico EDD**

### District III

Dewey Cave

**Mid-Region COG**

### District IV

Sandy Chancey

**Eastern Plains COG**

### District V

Hubert Quintana

**Southeastern New Mexico EDD**

**Chairman of NewMARC**

### District VI

Priscilla Lucero

**Southwest New Mexico COG**

### District VII

Jay Armijo

**South Central New Mexico COG**



# Why

To be competitive ... it is imperative  
for **New Mexico** to blend together  
all economic development  
strategic & tactical efforts





# Challenge

Build a **statewide, integrated system**  
to empower & assist  
the economic development community  
to better plan, manage & measure  
growth



ABOUT

SIX PILLARS

FOUNDATION

ISSUES & LEGISLATION

POLITICAL

GET INVOLVED

CONTACT



## SIX PILLARS

SECURING FLORIDA'S FUTURE, TOGETHER

[Florida Chamber of Commerce](#) » [Six Pillars](#) » [Overview](#)

## RECENT NEWS

SEP  
17

You're Invited to the 2014  
Future of Florida Forum

SEP  
16

Important Updates

Did You Know the Global  
Marketplace Will Double,  
Adding 1 Billion Consumers by  
2020?

SEP  
10

Important Updates

Florida Chamber Series on Free  
Enterprise: Pam Rauch

[READ ALL NEWS](#)

[JOIN THE FIGHT!  
BECOME A MEMBER TODAY](#)



# THE FLORIDA SCORECARD

The Metrics that Help Florida Leaders Secure Florida's Future

Search the Scorecard

Log-In to Your Scorecard

HOME

ABOUT THE FOUNDATION

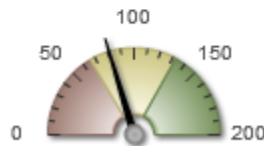
TRUSTEES

BLOG

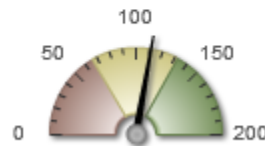
Florida Chamber

Political Institute

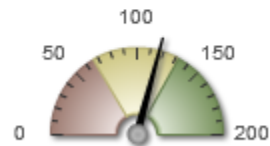
Workforce Scorecard



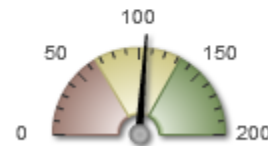
Talent Supply & Education



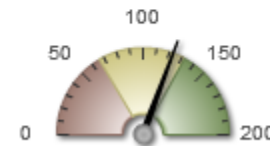
Innovation & Economic Development



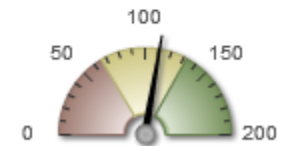
Infrastructure & Growth Leadership



Business Climate & Competitiveness

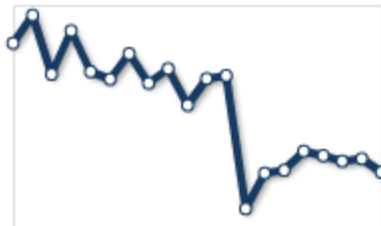


Civic & Governance Systems



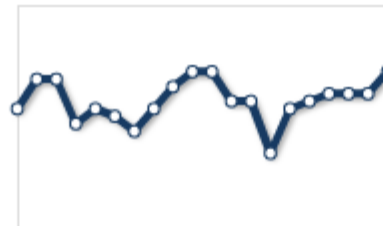
Quality of Life & Quality Places

## Key Indicators



### Home Foreclosures

As Florida continues to recover from the housing market collapse, trends in home foreclosures provide insight into Florida's progress through the extended recovery...



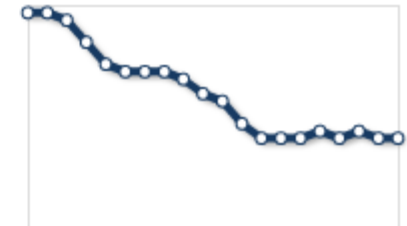
### Consumer Confidence

The Florida Consumer Confidence Index measures residents' perceptions of personal finances now compared to a year ago and expectations of U.S...



### Population

Florida has the 4th largest population in the U.S., estimated at just over 19 million in April 2012...



### Unemployment Rate

Florida has a labor force of over 9 million, ready to meet the workforce needs of businesses...

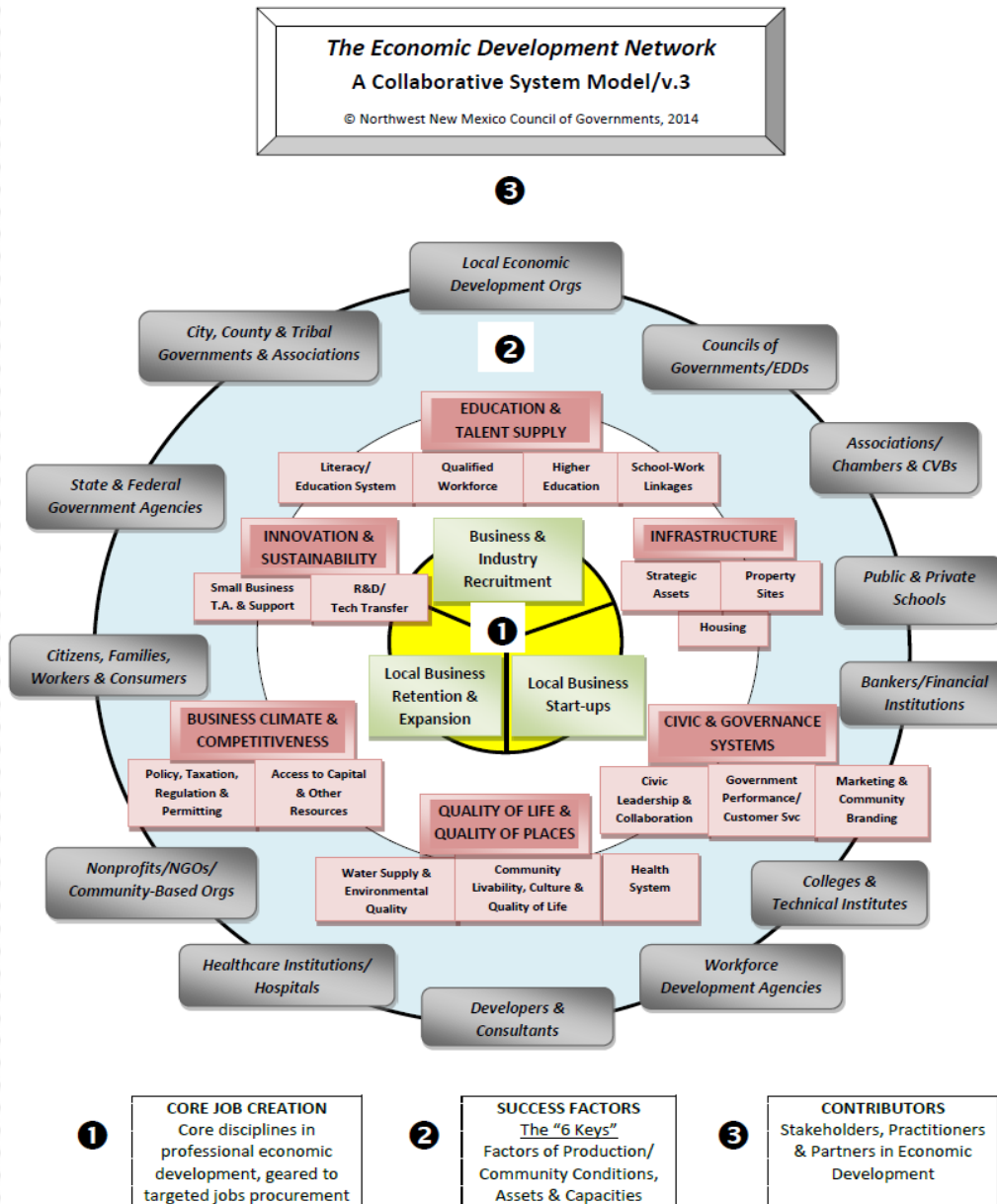
# Approach

Review & rethink  
all aspects of the statewide process  
and build a practical tool  
that captures, coordinates &  
communicates all efforts





# MAKING SENSE OF A COMPLEX NETWORK



» **Infrastructure**

» **Innovation &  
Sustainability**

» **Business Climate**

» **Talent Supply**

» **Quality of Life**

» **Leadership**

» **Direct Job  
Creation**

## **THE “7 CHILES”**

**Success Factors/Factors of Production**







Contact Us at [\(800\) 532-8448](tel:800-532-8448)

[Paladin Home](#) [Cloud Solutions](#) [Company](#) [News & Events](#) [Contact](#)

## Program Knowledge Organizer

# PANORAMIC™

### Panoramic

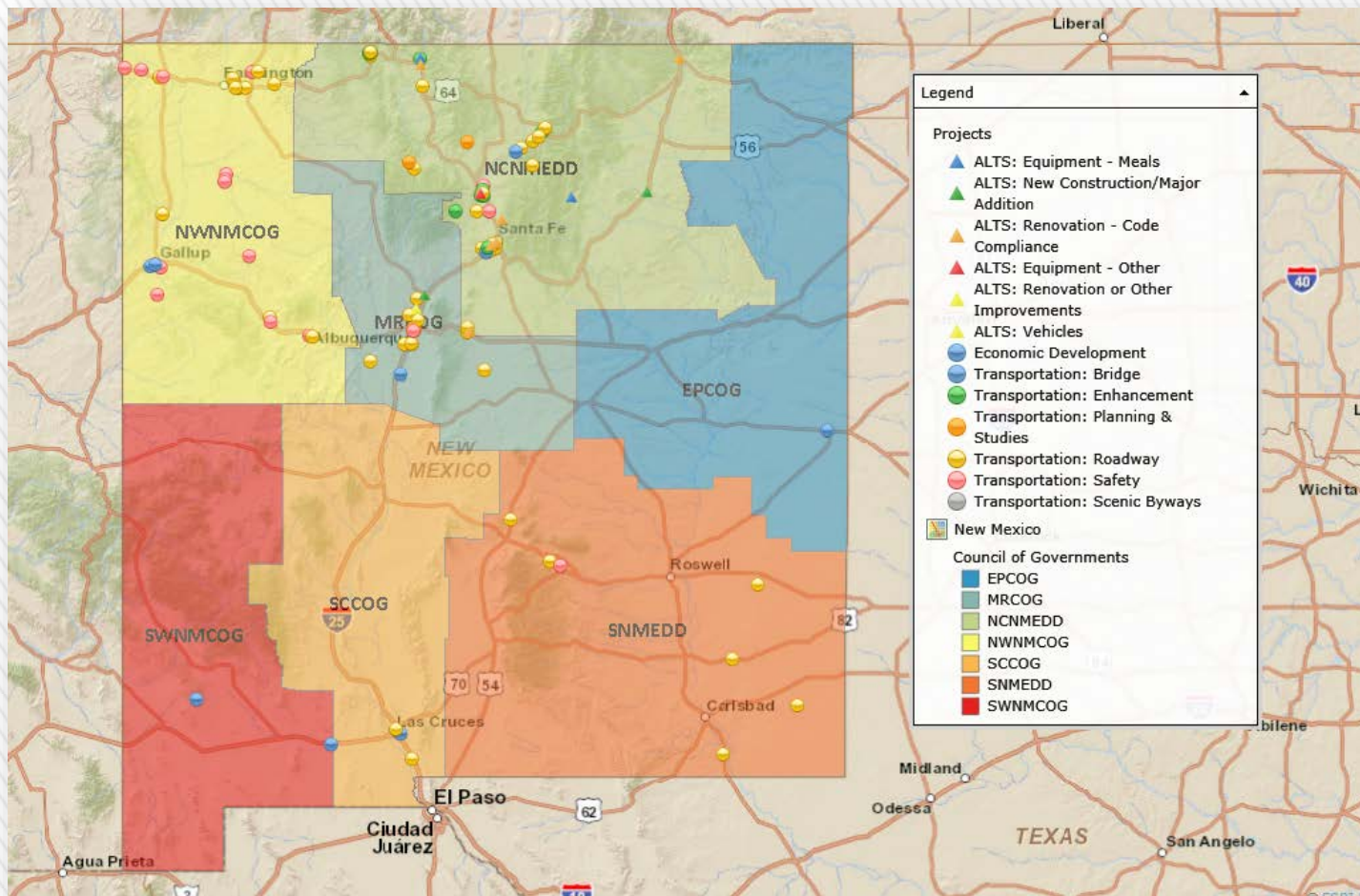
Program Knowledge Organizer that tracks, manages and communicates important information and data.

[> Read More](#)



The *Panoramic*® Program Knowledge Organizer tracks, manages & communicates important data on projects & programs – visually and in real time





# New Mexico Project Map [sample]



# Attributes

- a) All Projects & Programs
- b) Prioritize Strategies – Local, Regional & Statewide
- c) Rate & Rank Investability
- d) Dashboards/Track Progress
- e) Searchable Database



# Benefits

- a) Vision Management
- b) Anytime/Anywhere
- c) Access to Resources
- d) Level the Playing Field
- e) Study—Plan—Act—Reflect
- f) Economic Results/Outcomes

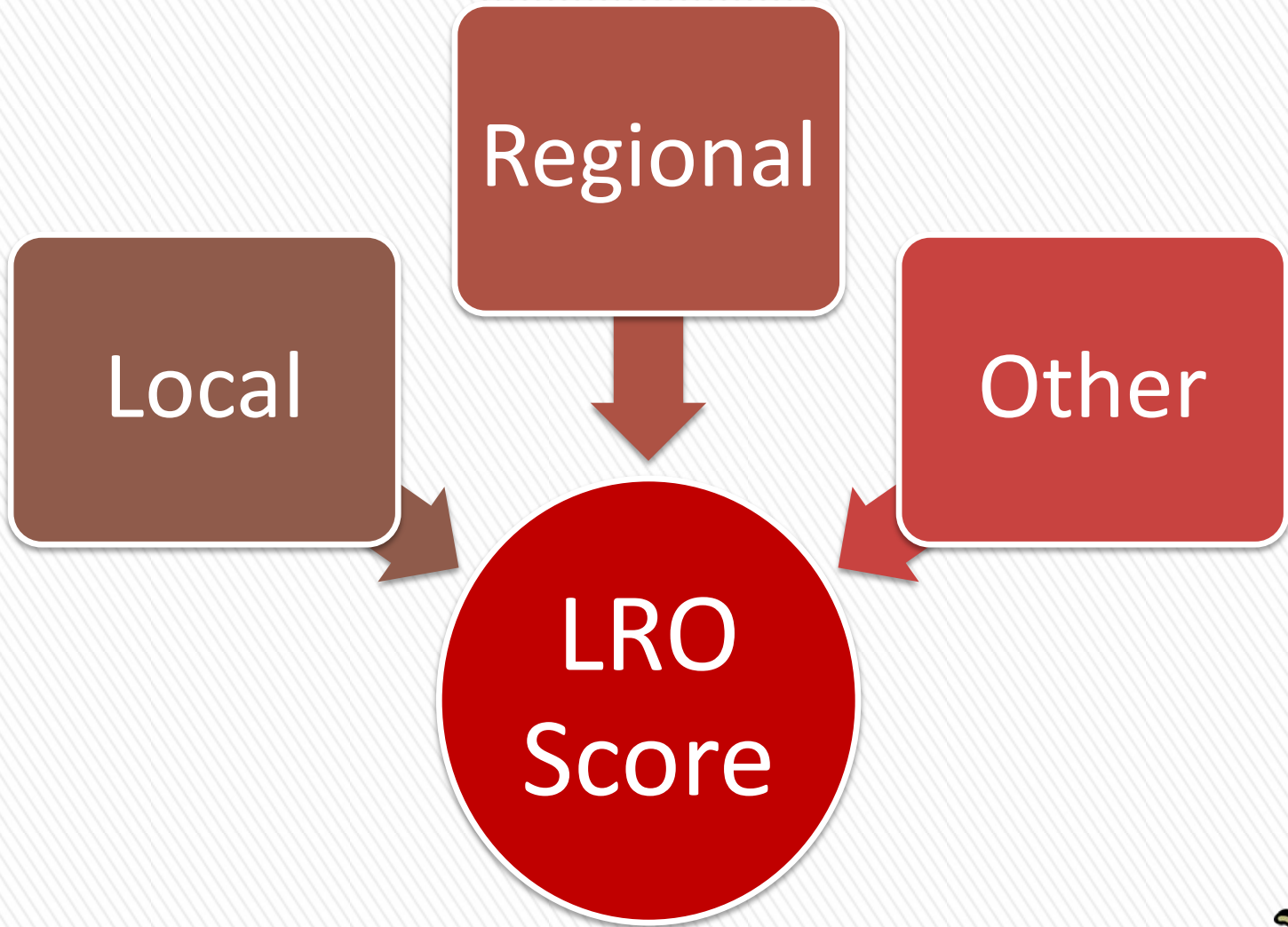


# Goal

Rank all projects & programs  
fairly & evenly  
by calculating an “INVESTABILITY SCORE”  
based on objective criteria







**INVESTABILITY SCORE**



# DEVELOPMENT & BUDGET

## Phase 1:

NewMARC &  
EDA funding  
(2014)

## Phase 2:

Add ED  
partners  
funding (2015)

## Phase 3:

Add state  
funding  
(2016+)



# Partners/Supporters

- a) NM Interim Jobs Council/Dashboard
- b) NM Economic Development Department
- c) Universities & Colleges
- d) Association of Commerce & Industry
- e) Finance New Mexico
- f) NM Association of Counties
- g) NM Legislative Finance Committee
- h) Workforce Development Boards
- i) Office of the Lt. Governor



# Success Metric

New process & platform  
become key components  
of the New Mexico

“community development tool kit”  
for use by all stakeholders





# Thank You

Jeff Kiely

**Northwest New Mexico COG**

[jkiely@nwnmcog.org](mailto:jkiely@nwnmcog.org)

505-722-4327

Tim Armer

**North Central New Mexico EDD**

[tima@ncnmedd.com](mailto:tima@ncnmedd.com)

505-395-2668

**NewMARC**

New Mexico Association of Regional Councils

