
Parklet or Plazuela

A Pilot Project

The Problem





Challenges

Blight

Ideas ?

This was the easy part.

Really, the only easy part.

\$\$\$\$\$\$\$\$\$\$\$\$\$\$\$\$

Reoccurring Theme

- Keep your ear to the ground
- Have no shame
- Ask Ask Ask

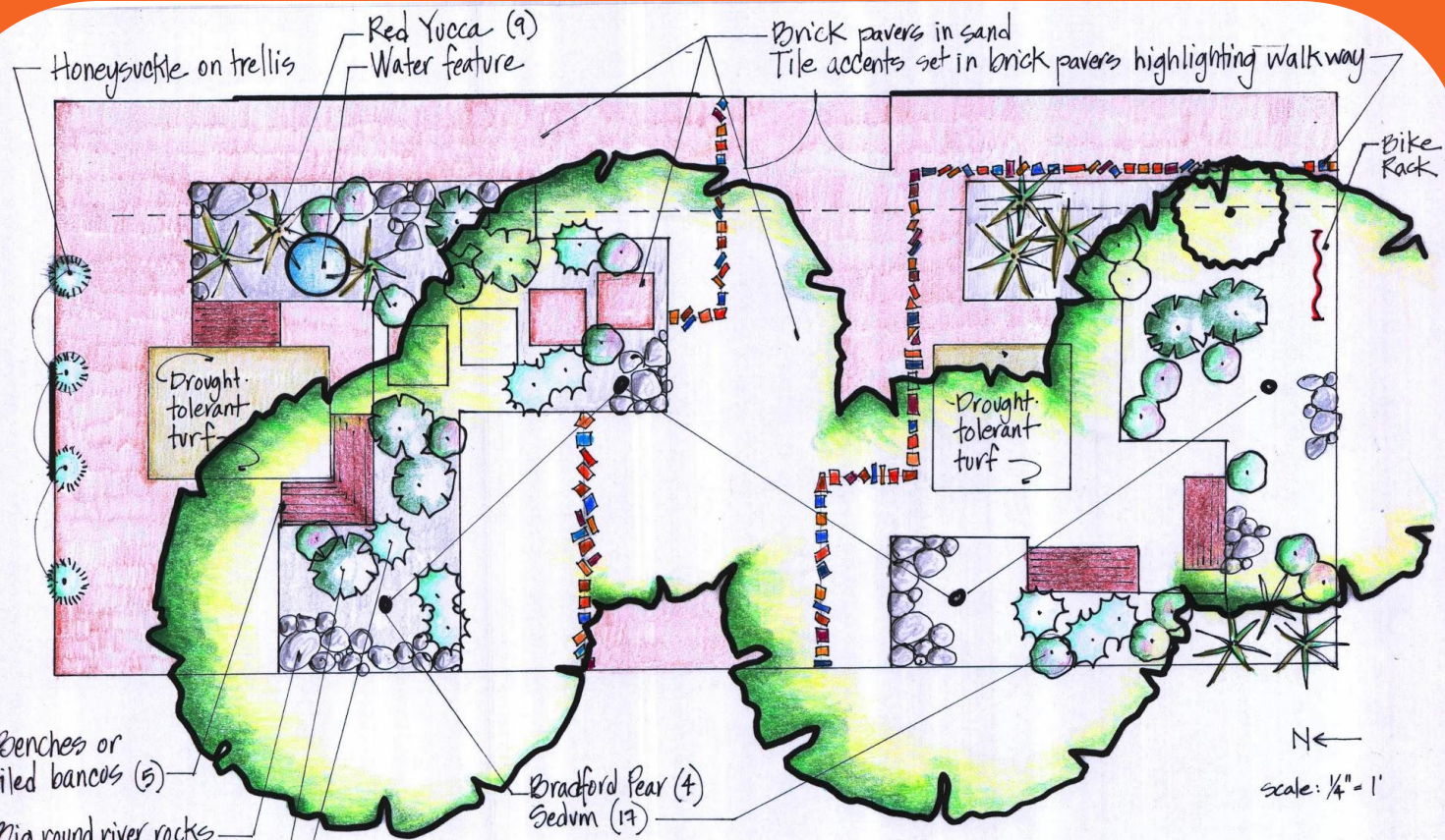
Logistics

Many Moving Parts

Inspect vs. Expect

- Partnerships
- Planning
- Perseverance

Dream Big



Benches or tiled bancos (5)

Big round river rocks through-out as mulch
Rosemary (7)

Cherry sage (9)
Sedum (17)

Red Yucca (9)
Water feature

Brick pavers in sand
Tile accents set in brick pavers highlighting walkway

Bike Rack

Drought-tolerant turf

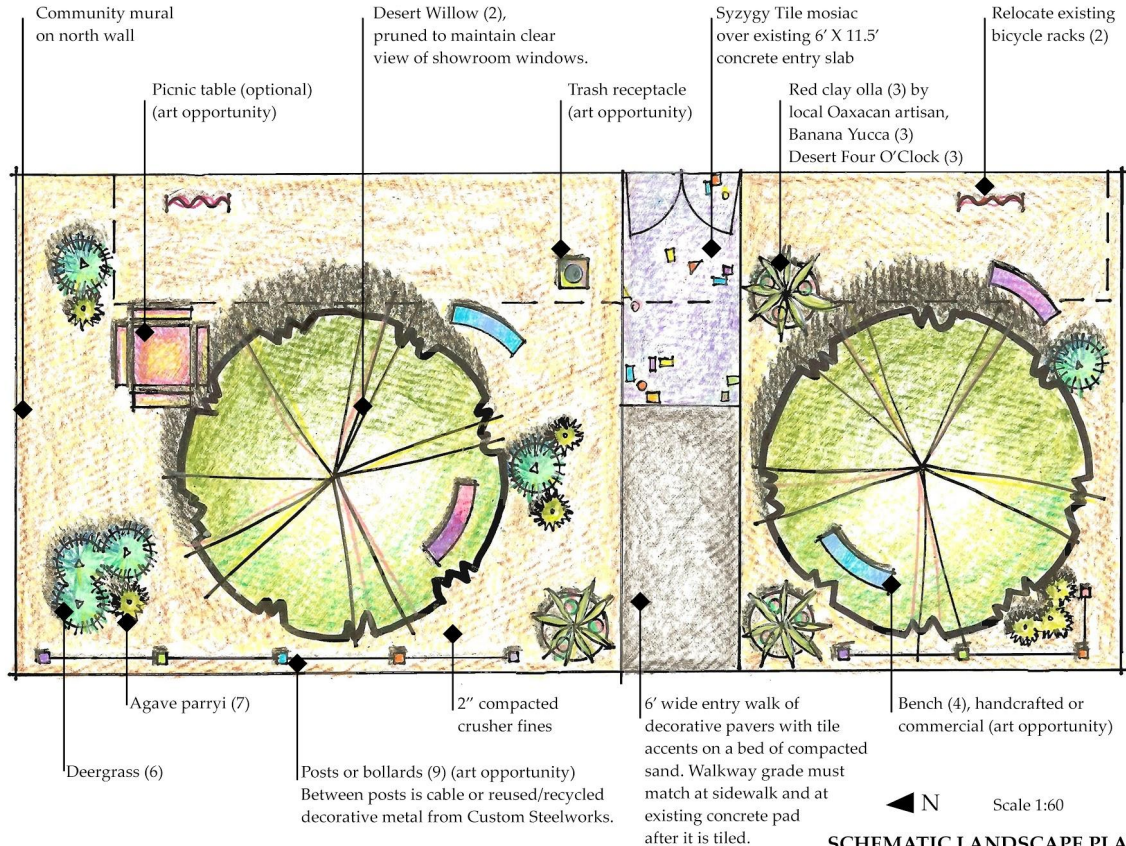
Drought-tolerant turf

Bradford Pear (4)
Sedum (17)

N

scale: 1/4" = 1'

SCHEMATIC LANDSCAPE PLAN
2006
SYZYGY TILE
Silver City



NOTE: Remove wheelstops and all existing paving except 6' wide concrete entry pad. Grade to detain rainwater runoff in tree wells, then to overflow to street. Finish grade after compacting crusher fines to 2" layer should match sidewalk and entry walk grades where they meet.

SCHEMATIC LANDSCAPE PLAN

5/2013

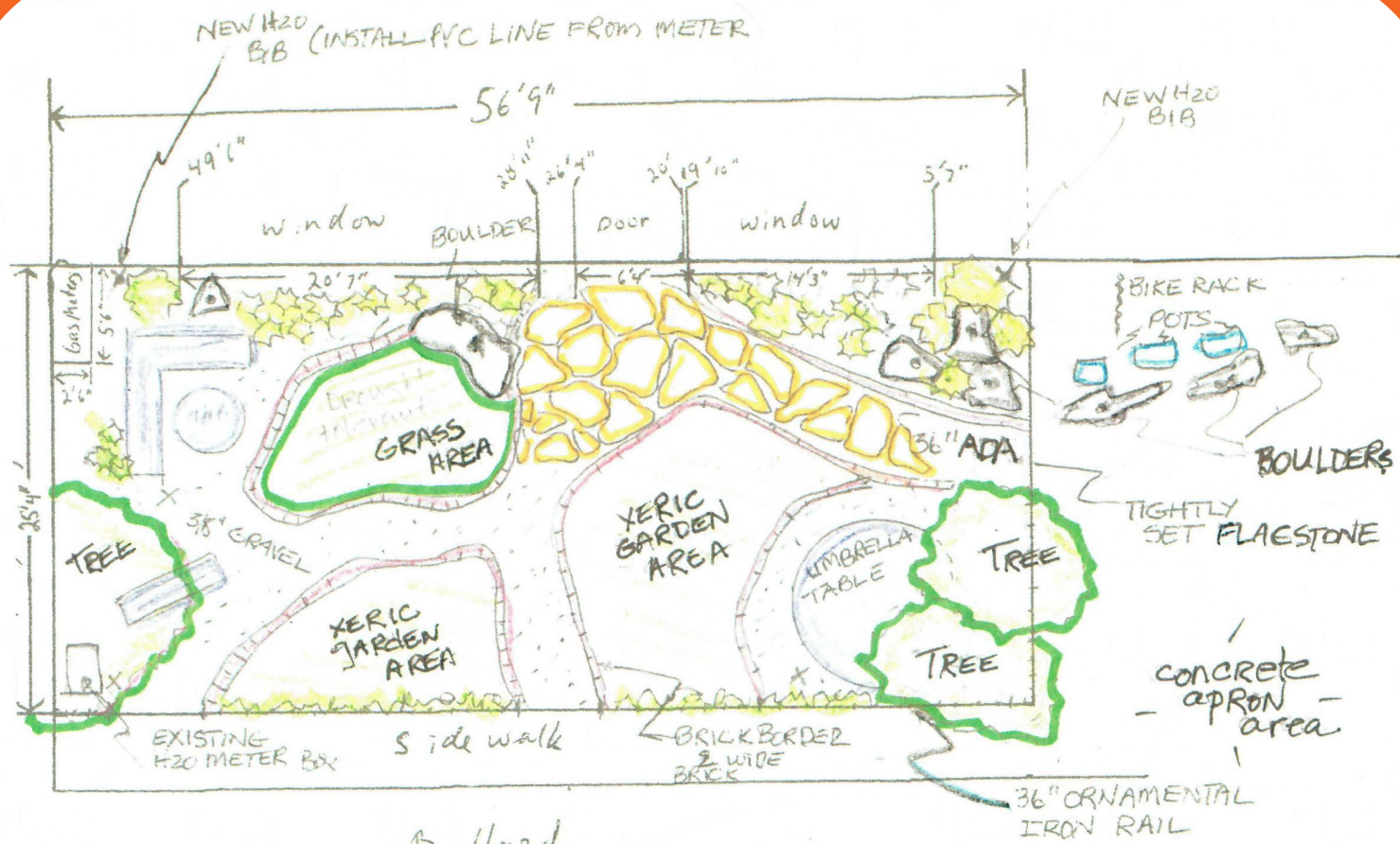
SYZYGY TILE

Silver City, NM

\$50k

DO NOT QUIT!

A New Plan



Dullard

More Challenges

Tenant

Property Ownership

Syzygy Tile

Third Party

Landlord

Wants Hands-Off

Legwork

Talk Benefits

Municipality

Legal Requirements

Must have cooperation

This IS private/public
partnerships

New Mexico Tourism

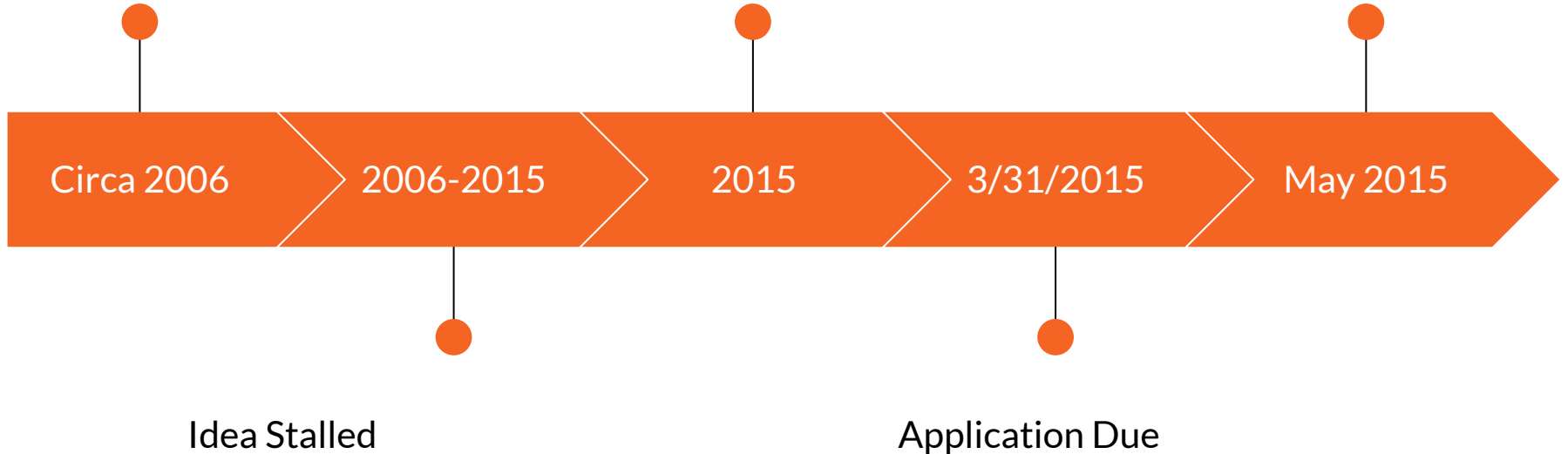
Clean & Beautiful

The plan exceeded the original grant
opportunity

The Idea formed

Clean & Beautiful
Grant ?

Grant Awarded



\$26,000

Full funding

\$6,500

Matching Funds

Implementation

(place your head into the moving parts)













Impact

2000 Words

The plants exceeded the original
plan







NEW MEXICO True

Adventure that feeds the soul

The team

Lee Gruber - Syzygy Tile

Scott Kennedy - Home Furniture

The Town of Silver City

Charlie Deans - Community by Design

Andrea Lawrence - New Mexico Clean & Beautiful

The State of New Mexico - Tourism Department

Many great Grant County community members
