

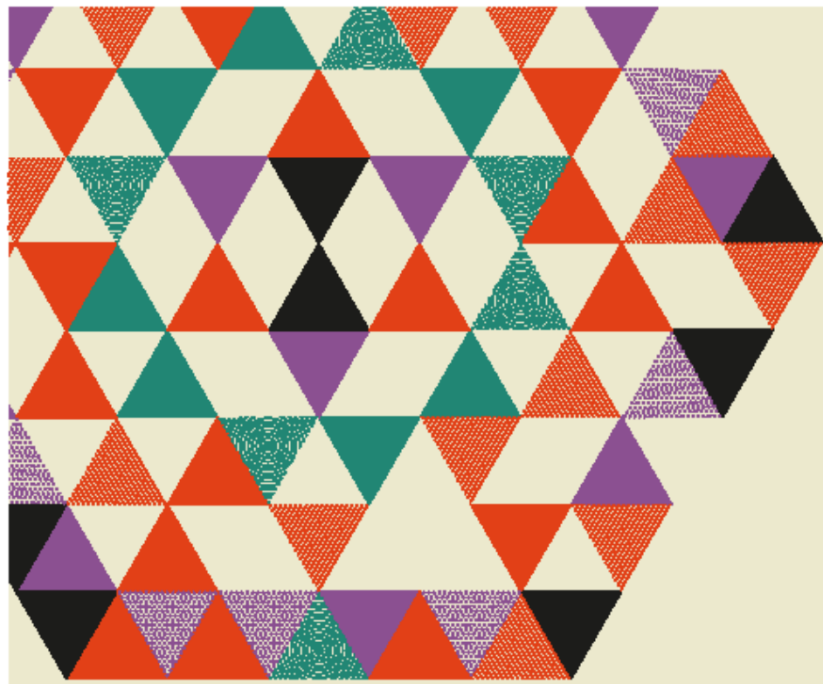
Placemaking and Public Art: Connections to Thriving Places and Destination Development



Robert Loftis, ASLA



With community-based participation at its center, an effective placemaking process capitalizes on a local community's assets, inspiration, and potential, and it results in the creation of quality public spaces that contribute to people's health, happiness, and well being.



Creative PLACEMAKING

Ann Markusen Markusen Economic Research Services
Anne Gadwa Metris Arts Consulting

EXECUTIVE SUMMARY



A White Paper for The Mayors' Institute on City Design, a leadership initiative of the National Endowment for the Arts in partnership with the United States Conference of Mayors and American Architectural Foundation.

In creative placemaking, partners from public, private, non-profit, and community sectors strategically shape the physical and social character of a neighborhood, town, city, or region around arts and cultural activities. Creative placemaking animates public and private spaces, rejuvenates structures and streetscapes, improves local business viability and public safety, and brings diverse people together to celebrate, inspire, and be inspired.

Types of Public Art



Sallie Chisum - Artesia



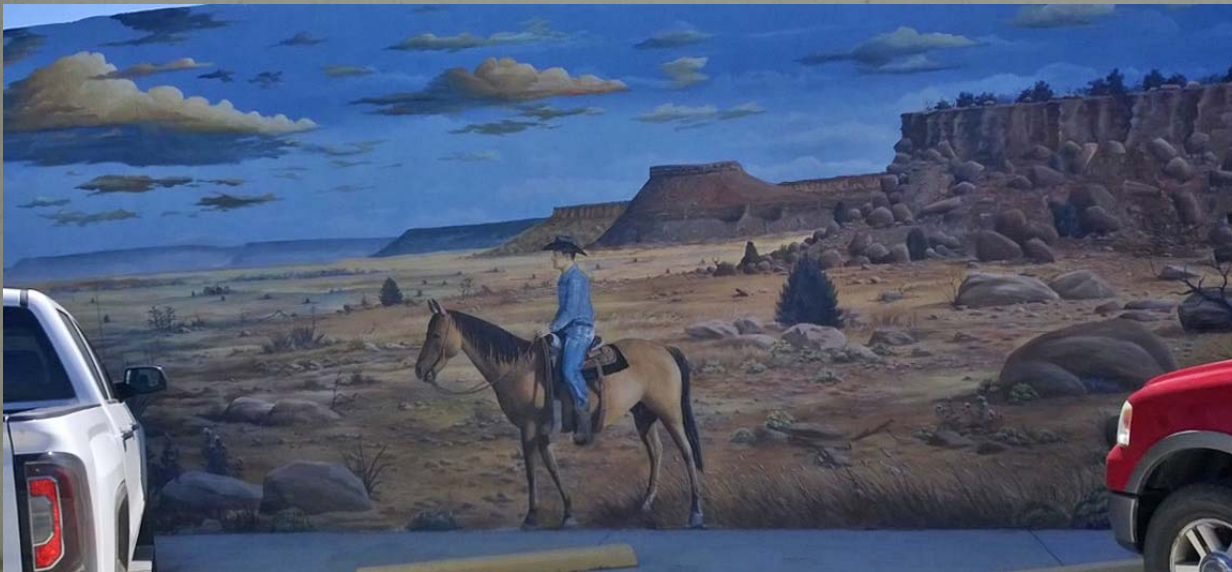
Corn Maiden - Isleta Pueblo



Los Angeles, CA



Artesia



Tucumcari



Photo by Luis Sanchez Saturno



Seattle, WA

Artist: Paul Sorey



Artesia



de Amistad- Albuquerque



Martineztown Park - Albuquerque



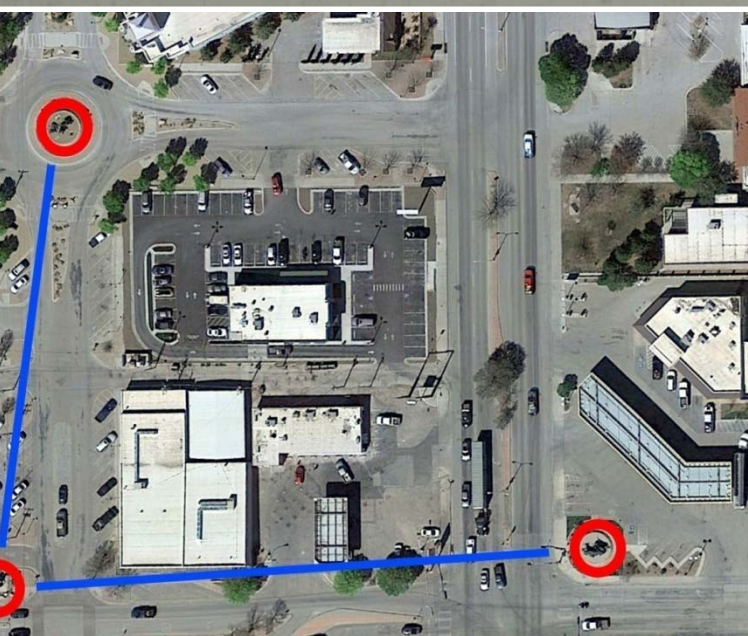
What can Public Art Do?

energize a space, create a destination, become a landmark...





... move people through a district...



History in Bronze - Artesia



represent and honor the ranching industry in southeastern New Mexico that began in the late 1800s and was the development of Artesia. The three sculptures feature personalities common in the Pecos Valley during the late 1800s and depict an action that may have been typical in the Southwest.



THE GUERRERO



THE TRAIL BOSS



THE RUSTLER



ALLIE CISUM



THE DERRICK FLOOR



THE PARTNERS



PEERING DISTANCE



WOMEN'S INTUITION



THE FOUNDATION



DOWNTOWN MAP ~ GALLERIES & STUDIOS



Galleries

- | | |
|-------------------------------------|--|
| 1. A Space Studio & Gallery | 16. Soul River Gallery |
| 2. Barker Manning Gallery | 17. Syzygy Tile |
| 3. Blue Dome Gallery | 18. Tatiana Maria Gallery |
| 5. Elemental Artisans | 19. The Glasserie |
| 6. Finn's Gallery | 20. The Makery |
| 7. Leyba & Ingalls ARTS | 21. The Place |
| 8. Lloyd Studios | 22. WNMU Francis McCray Gallery |
| 9. Lois Duffy Art | 23. Wynnegate Gallery & Studio |
| 10. Lumiere Editions | 24. Silver City Museum Society |
| 11. Mariah's Copper Quail Gallery | MRAC. Mimbres Region Arts Council - in Wells Fargo Bank Bldg |
| 12. Molly Ramolla Gallery & Framing | ACD. Arts & Cultural District - in Visitor Center |
| 13. Moonstruck Art | |
| 15. Seedboat Gallery | |

Studios

- | | |
|---|----------------------------------|
| 30. Diana Ingalls Leyba Studio | 41. The Warehouse, Suzi Calhoun |
| 39. The Barking Dog Studio, Gretchen Haas | 42. The Warehouse, Janey Katz |
| 40. The Cliffs Studio, Diane Kleiss | 47. Zoe Wolfe's Studio & Gallery |

Silver City ART Association
 315 N Bullard Street
 Silver City, NM 88061
www.silvercityart.com





o Baca- Reserve Photo by Peter Potrowl

Martineztown Park- Albuquerque



tell your community's story...



Liverpool, England

Photo by Paul Ellis



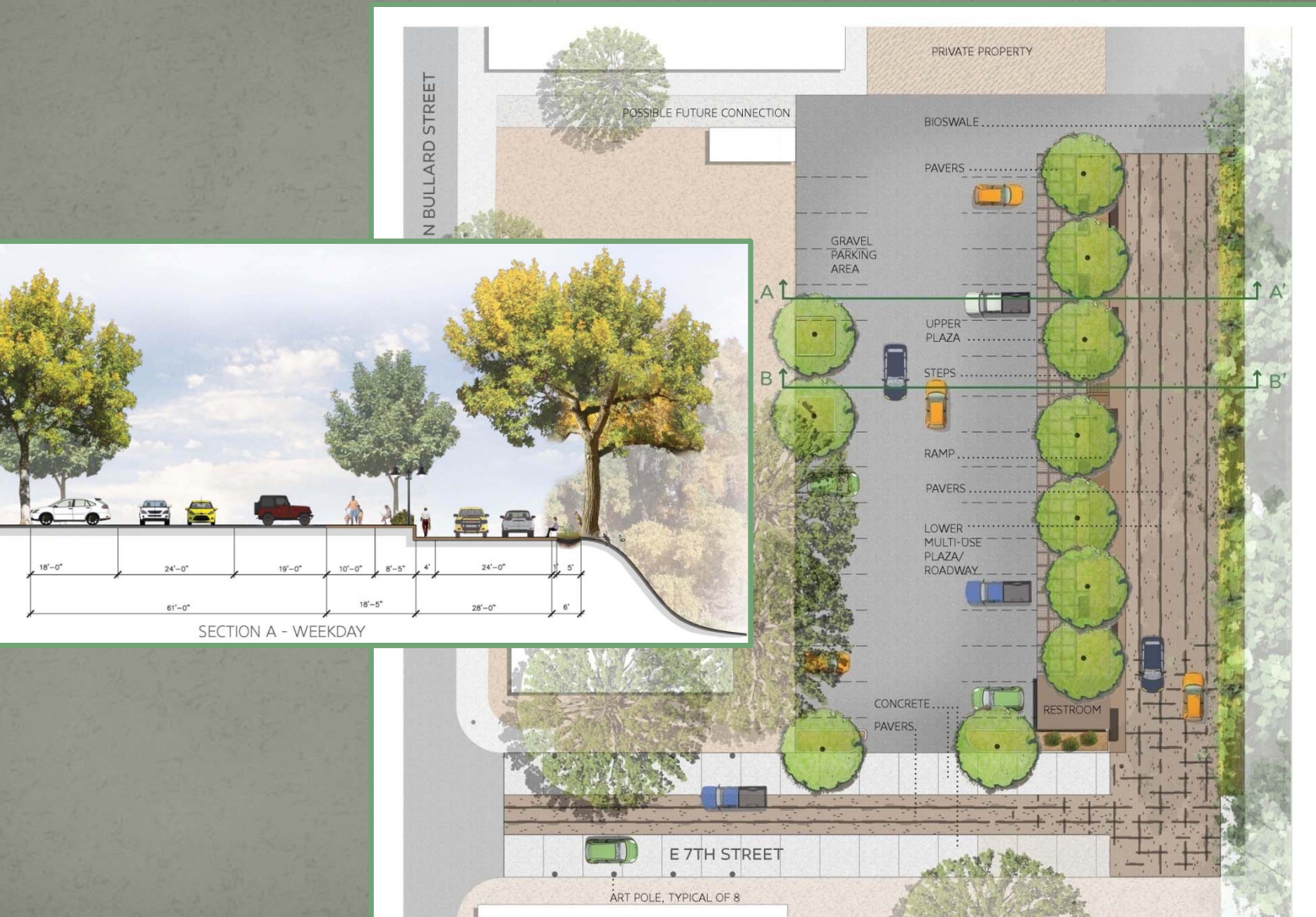
Albuquerque

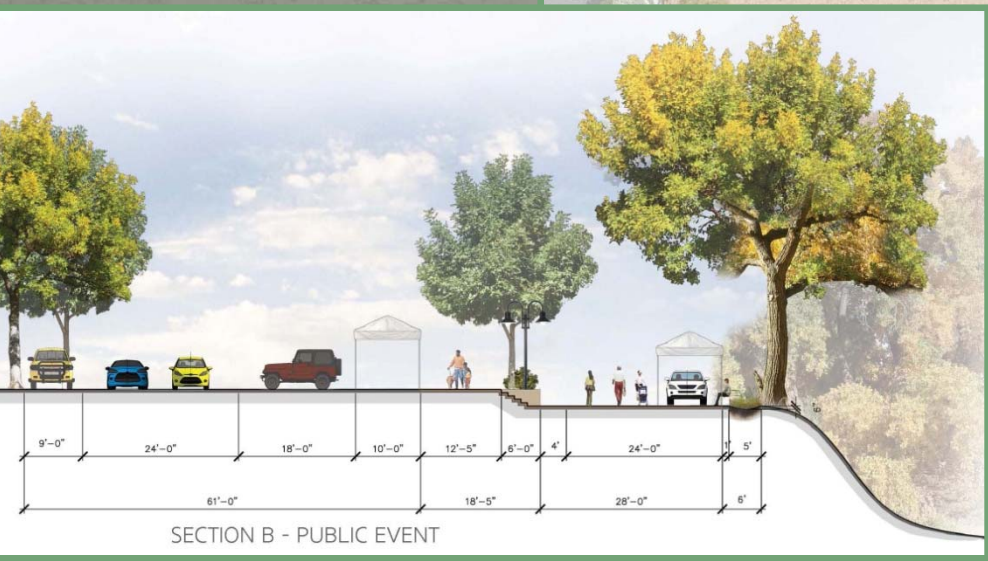
...delight!



All

Over City – Main Street Plaza





PUBLIC EVENT LAYOUT PLAN



ACCENT MATERIALS



FLYER STONE



PIONEER BEAMS



TERRITORIAL BRICK STEPS



FLYER STONE AND HORSE PRINT CUSTOM PAVING PATTERN

ART POLES

EXAMPLES ONLY
POLES WOULD BE DESIGNED
BY LOCAL ART COMMUNITY



Program Considerations

District Entry Sign Options



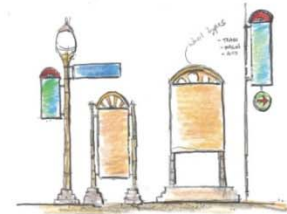
Station Welcome Sign Option



Entry Arch (future phase)



Optional Sidewalk Signs within District



LEGEND

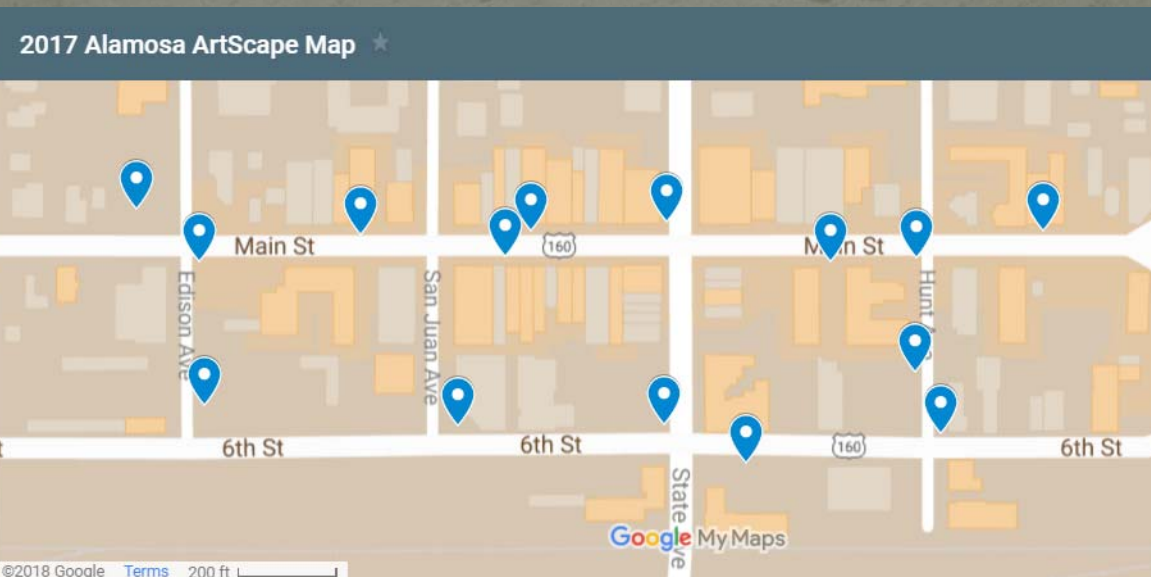
-  Entry Arch
-  District Welcome Sign
-  District Entry Sign



SIGNAGE SCHEMATIC PLAN

RATON, NM • GREAT BLOCKS • DECEMBER, 2015





Alamosa ArtScape





buquerque Museum



by Jen French

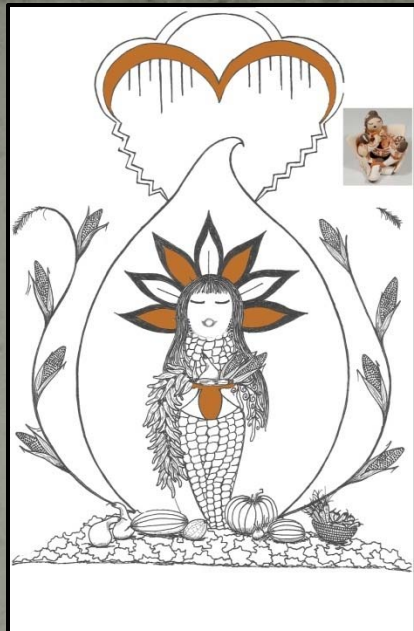


Photo by The Taos News



Photo by GEO*trailblazer!

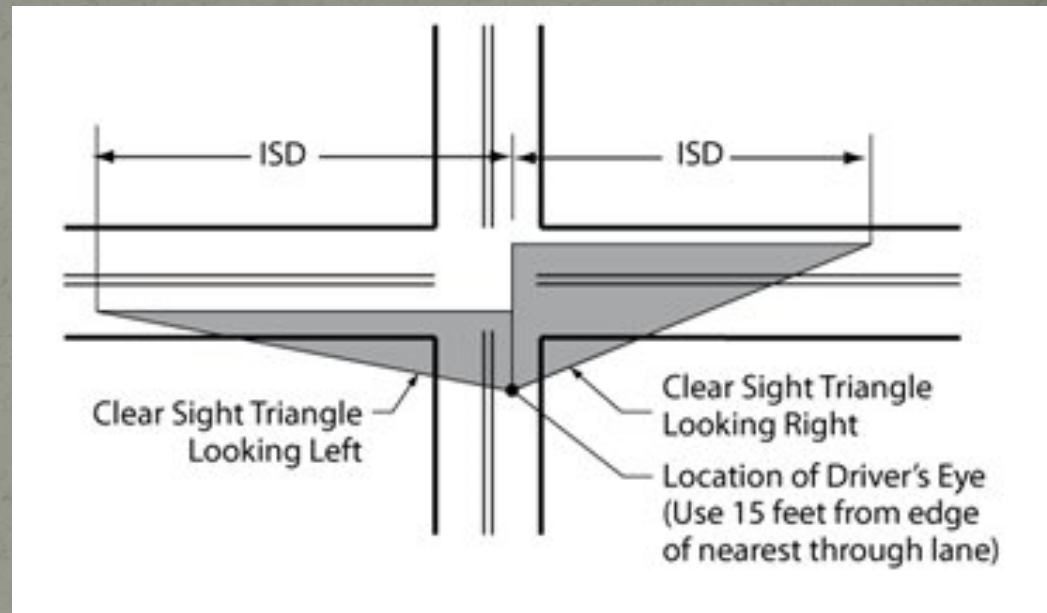




n Teller - Isleta



Technical Considerations...



Traffic Sight Lines

Safety



Halagueno Art Park - Carlsbad



Rio Frio Ice Fest - Alamosa, CO

rability and permanence



Structural Issues



Lighting



Infrastructure needs



Architectural Scale



Trail Along the Rio Grande



Pedestrian Scale

Scale

links:

Project for Public Spaces: www.pps.org

National Endowment for the Arts:
www.arts.gov/artistic-fields/creative-placemaking

American Art Resource Center:
www.americansforthearts.com



Robert Loftis, ASLA
www.mrwmla.com

Instagram / twitter / facebook / linkedin